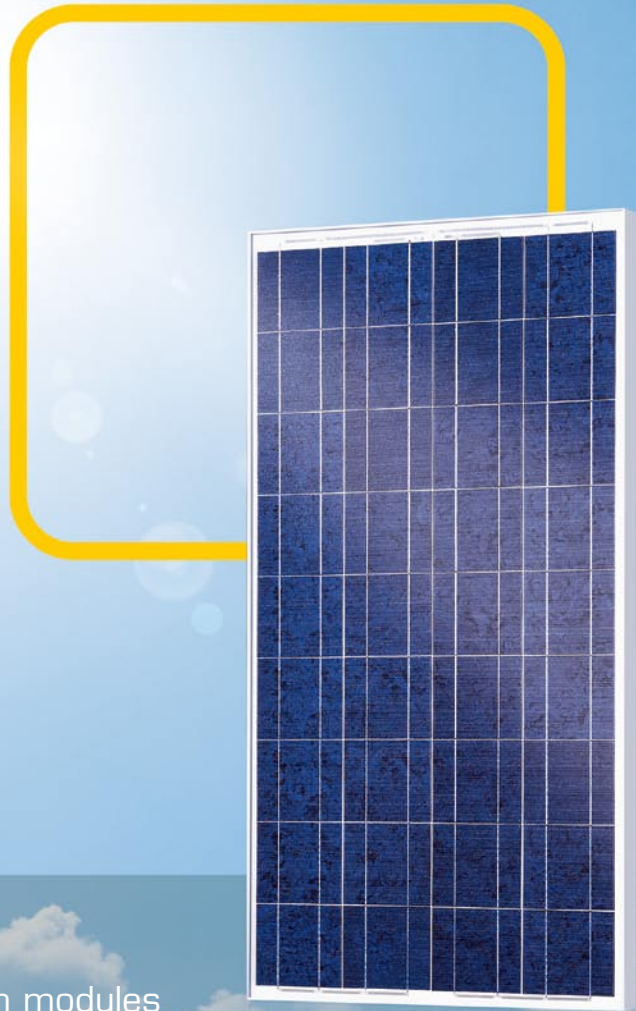


Play it safe



Premium modules
MADE IN GERMANY

12-year
product warranty

NEW

Premium S poly

130 W • 135 W • 140 W

- Guaranteed high yields for decades
- 12-year product warranty
25-year performance warranty
- Certified production with state-of-the-art technology
- Also available without frame

Premium S poly

Electrical data under STC (Standard Test Conditions: 1000 W/m², 25 °C, AM 1.5)

Rated power	P_{max}	130 W	135 W	140 W
Sorting limits of performance		+/- 2.5 W	+/- 2.5 W	+/- 2.5 W
Voltage	U_{MPP}	17.72 V	17.94 V	17.95 V
Open circuit voltage	U_{OC}	21.69 V	21.86 V	22.30 V
Current	I_{MPP}	7.34 A	7.52 A	7.85 A
Short-circuit current	I_{SC}	7.96 A	8.08 A	8.21 A
Efficiency		13.0 %	13.5 %	14.0 %

Electrical data at 800 W/m², NOCT (47 °C +/- 2K), AM 1.5

Power in MPP	P_{max}	96 W	100 W	104 W
Voltage	U_{MPP}	16.08 V	16.28 V	16.29 V
Open circuit voltage	U_{OC}	19.91 V	20.07 V	20.47 V
Current	I_{MPP}	5.98 A	6.13 A	6.39 A
Short-circuit current	I_{SC}	6.44 A	6.54 A	6.64 A

The efficiency decreases by approximately 3.1% compared to the efficiency under STC at an irradiation of 200 W/m² and 25 °C.

Temperature data

Power temperature coefficient	$T_K(P_{MPP})$	-0.47 %/K
Voltage temperature coefficient	$T_K(U_{OC})$	-72 mV/K
Current temperature coefficient	$T_K(I_{SC})$	3.89 mA/K

Further information

Number of cells	36
Max. system voltage	1000 V
Reverse current loading capability	17 A
Front cover	Special hardened low-iron glass
Module connection	Connection box with 2 bypass diodes, 2 m solar cable Ø 4 mm ² , plug connector IP 68 Lumberg LC4, socket at the connection box
Snow load*	Without frame: 2400 Pa $\hat{=}$ 245 kg/m ²
Load tested according to EN IEC 61215 (ed. 2)	Framed: 5400 Pa $\hat{=}$ 550 kg/m ²

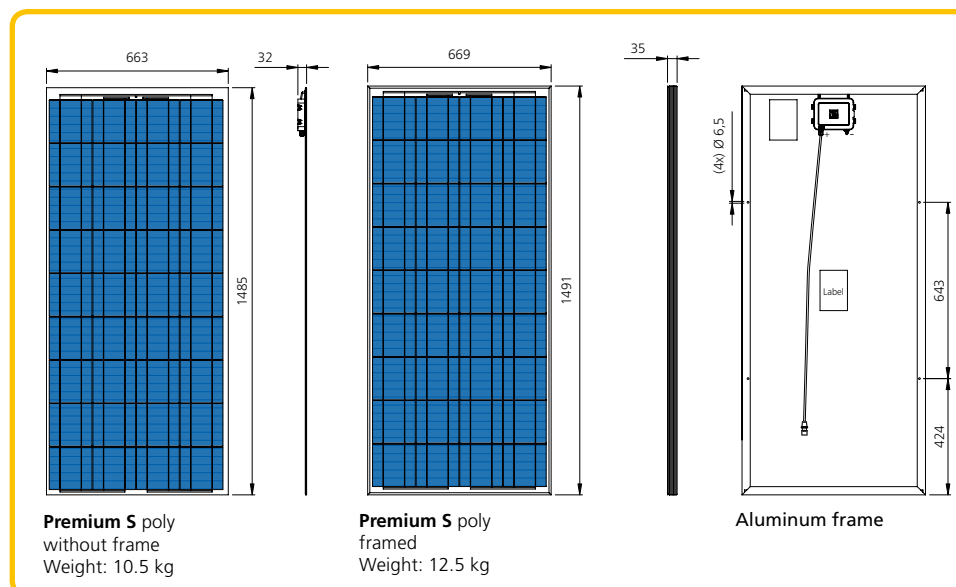
* In combination with our patented Profilink mounting system and in compliance with the installation and operating manual.

12-year product warranty, 25-year performance warranty on solar power modules according to our additional warranty conditions, which we will gladly send you.

Subject to technical modifications with corresponding follow-up certifications.

Certifications

EN IEC 61215 (ed. 2)	
EN IEC 61730-1, -2	
Protection class II	
Directive 2006/95/EG (CE)	
MCS	pending



Your specialist dealer:

Solar-Fabrik AG
 Munzinger Str. 10
 79111 Freiburg
 Germany
 Phone +49 (0)761 4000-0
 Fax +49 (0)761 4000-199
www.solar-fabrik.de